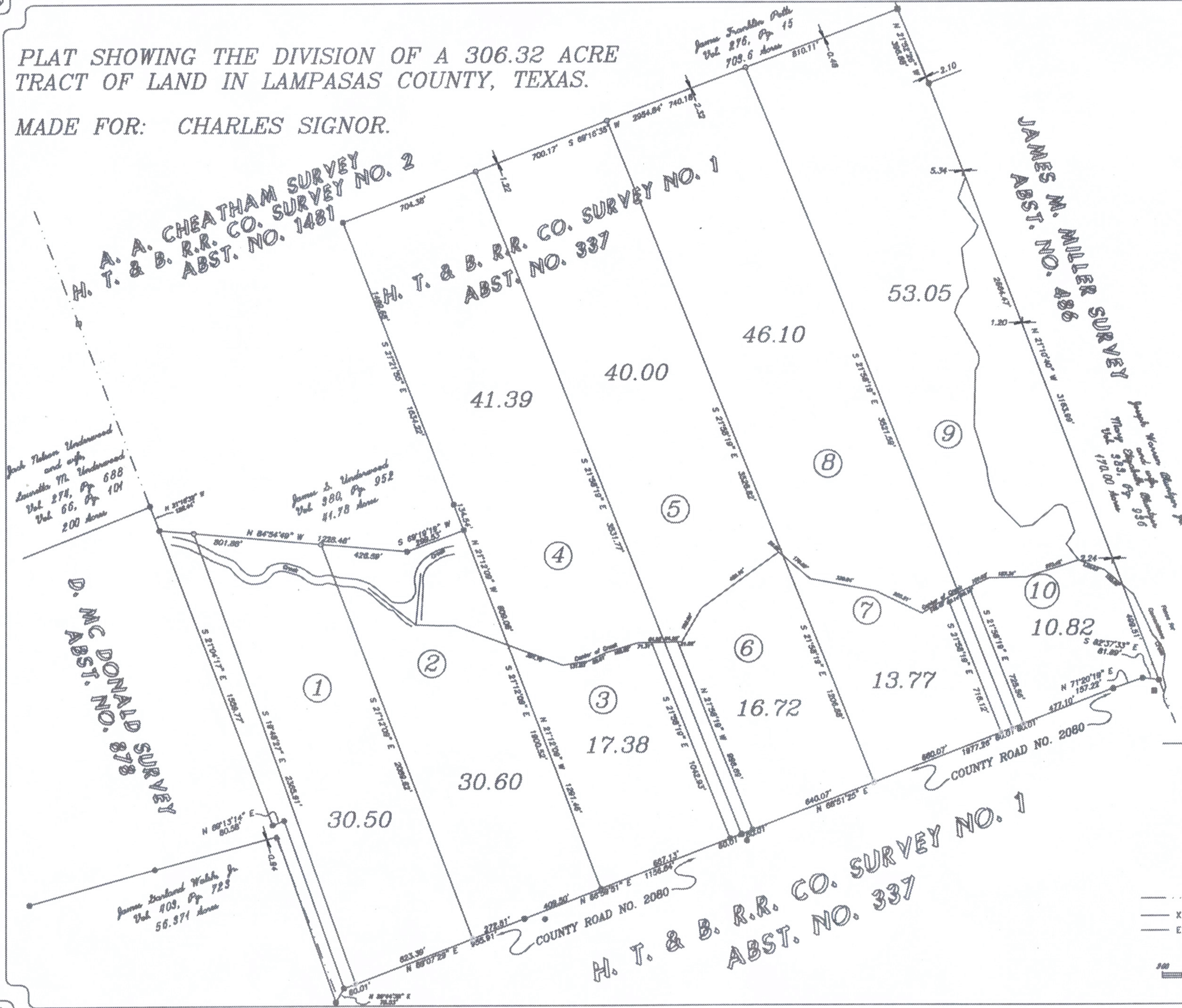


PLAT SHOWING THE DIVISION OF A 306.32 ACRE TRACT OF LAND IN LAMPASAS COUNTY, TEXAS.

MADE FOR: CHARLES SIGNOR.



LEGEND

- = IRON PIN SET
 - = IRON PIN FOUND
 - ⊙ = PIPE FENCE POST
 - ▲ = 60d NAIL FOUND
 - = FENCE POST
 - ⊕ = UTILITY POLE
 - ⊥ = DOWN GUY
 - ⊠ = TELEPHONE JUNCTION BOX
 - = PATENT SURVEY LINE
 - X — = WIRE FENCE
 - E — = ELECTRICAL LINE
- (RECORD DATA)

