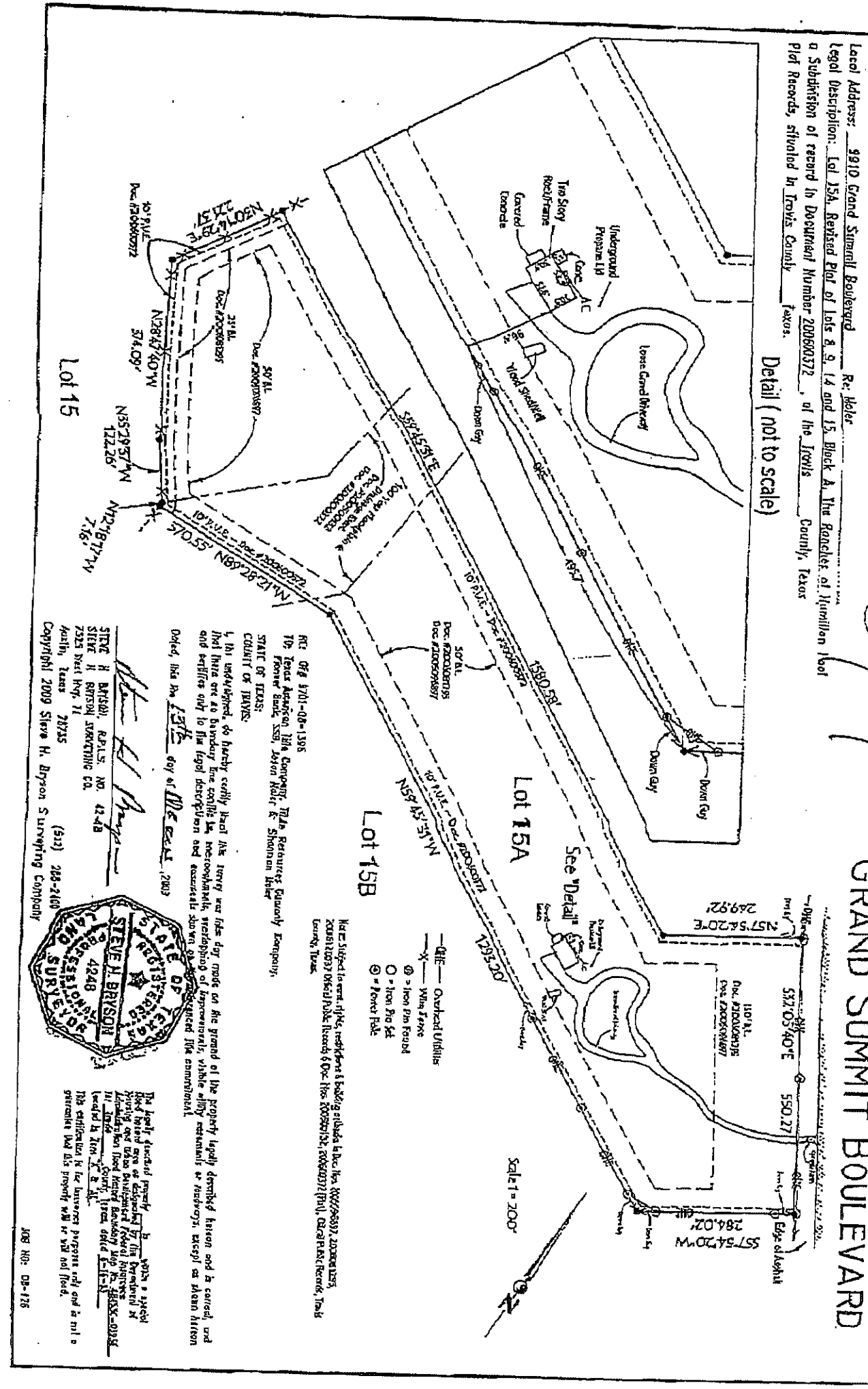


SURVEY PLAT OF

GRAND SUMMIT BOULEVARD

Local Address: 9910 Grand Summit Boulevard Re: Header
 Legal Description: Lot 15A, Revised Plat of Lots 8, 9, 14 and 15, Block A, The Ranches of Humilion Hill
 a Subdivision of record in Document Number 200600372, of the Texas County, Texas
 Plat Records, situated in Texas County Texas

Detail (not to scale)



Lot 15B

Lot 15A

Lot 15

Scale 1" = 200'

- O— Overhead Utilities
- X— Utility Trench
- ● Iron Pin Found
- ⊗ Iron Stake

Note: Subject to easement, riparian, and building setbacks and other laws, including 301.002, 301.003, 301.004, 301.005, 301.006, 301.007, 301.008, 301.009, 301.010, 301.011, 301.012, 301.013, 301.014, 301.015, 301.016, 301.017, 301.018, 301.019, 301.020, 301.021, 301.022, 301.023, 301.024, 301.025, 301.026, 301.027, 301.028, 301.029, 301.030, 301.031, 301.032, 301.033, 301.034, 301.035, 301.036, 301.037, 301.038, 301.039, 301.040, 301.041, 301.042, 301.043, 301.044, 301.045, 301.046, 301.047, 301.048, 301.049, 301.050, 301.051, 301.052, 301.053, 301.054, 301.055, 301.056, 301.057, 301.058, 301.059, 301.060, 301.061, 301.062, 301.063, 301.064, 301.065, 301.066, 301.067, 301.068, 301.069, 301.070, 301.071, 301.072, 301.073, 301.074, 301.075, 301.076, 301.077, 301.078, 301.079, 301.080, 301.081, 301.082, 301.083, 301.084, 301.085, 301.086, 301.087, 301.088, 301.089, 301.090, 301.091, 301.092, 301.093, 301.094, 301.095, 301.096, 301.097, 301.098, 301.099, 301.100, 301.101, 301.102, 301.103, 301.104, 301.105, 301.106, 301.107, 301.108, 301.109, 301.110, 301.111, 301.112, 301.113, 301.114, 301.115, 301.116, 301.117, 301.118, 301.119, 301.120, 301.121, 301.122, 301.123, 301.124, 301.125, 301.126, 301.127, 301.128, 301.129, 301.130, 301.131, 301.132, 301.133, 301.134, 301.135, 301.136, 301.137, 301.138, 301.139, 301.140, 301.141, 301.142, 301.143, 301.144, 301.145, 301.146, 301.147, 301.148, 301.149, 301.150, 301.151, 301.152, 301.153, 301.154, 301.155, 301.156, 301.157, 301.158, 301.159, 301.160, 301.161, 301.162, 301.163, 301.164, 301.165, 301.166, 301.167, 301.168, 301.169, 301.170, 301.171, 301.172, 301.173, 301.174, 301.175, 301.176, 301.177, 301.178, 301.179, 301.180, 301.181, 301.182, 301.183, 301.184, 301.185, 301.186, 301.187, 301.188, 301.189, 301.190, 301.191, 301.192, 301.193, 301.194, 301.195, 301.196, 301.197, 301.198, 301.199, 301.200

RIE Of 1701-08-1395
 TO: Texas A&M Univ. Computer, TMA Resources Company, Energy,
 Promer, Acad, SA, Jason Holt, E. Shannon Hiner
 STATE OF TEXAS:
 COUNTY OF TRAVIS:

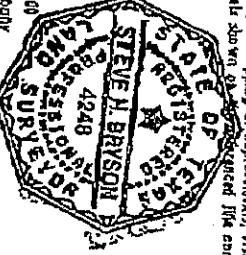
I, the undersigned, do hereby certify that the survey was filed for the record of the property legally described herein and is correct, and that there are no boundary line conflicts, encroachments, or other matters, which may affect the rights of the parties to this survey, except as shown herein and certified by the legal description and associated documents filed in connection with the plat.

Dated, this 15th day of Dec 2003

Signature

STEVE H. BRISON
 4248
 2525 West Hwy 71
 Austin, Texas 78735

Copyright 2009 Steve H. Bryson Surveying Company
 (512) 268-2160



This plat is a true and correct copy of the original filed with the County Clerk of Travis County, Texas, on this 15th day of Dec 2003. This certification is for the purposes of this act and is not a guarantee that the property will be sold as shown.